



INTELLIGENCE EMPOWERS MORE

S60

Color Doppler Diagnostic Ultrasound System





S60 adopts the intelligent Wis+ platform to help ultrasound professionals acquire and interpret ultrasound images more efficiently and precisely. This premium system keeps your practice at the forefront of ultrasound examinations and enables you to provide meticulous care for patients.

Wis⁺

Artificial Intelligence Based Ultrasound Platform

Wis+ is an innovative ultrasound platform using deep-learning based algorithms. It adopts programs called Convolutional Neural Networks to replicate the way human brain analyzes visual images. Through learning and evolving, the programs develop and enhance the ability to recognize and analyze tissue structures and lesion characteristics.



Patient Big Database



Expertise

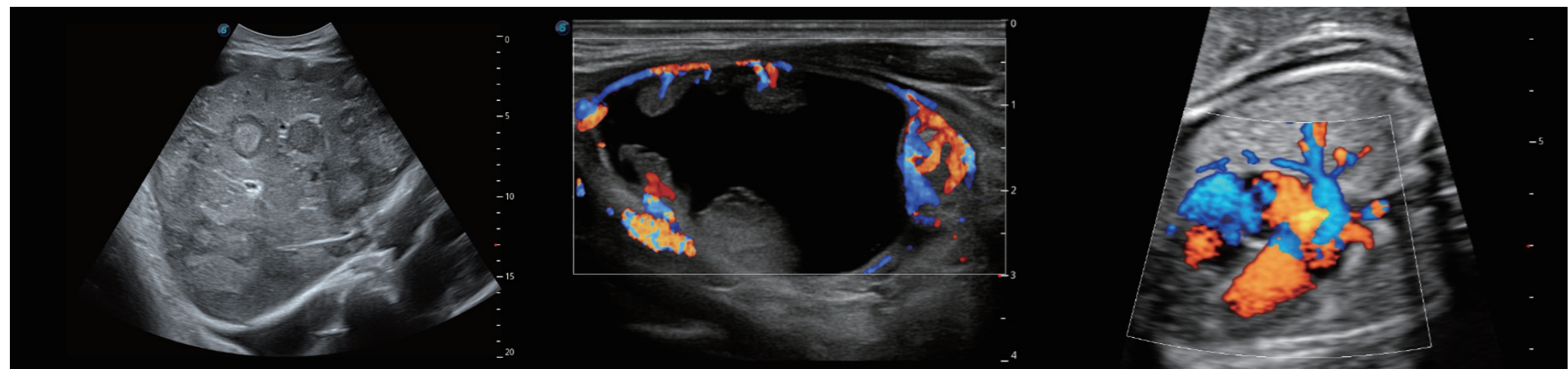


Deep Learning

Premium Transducers

A New Level of Clarity and Utility

The new series premium transducers on S60 deliver greater clarity, color and contrast by virtue of enhanced scan converters and innovative processing algorithms. The compact and lightweight design allows for a comfortable hand-wrist alignment, making daily scanning less demanding.



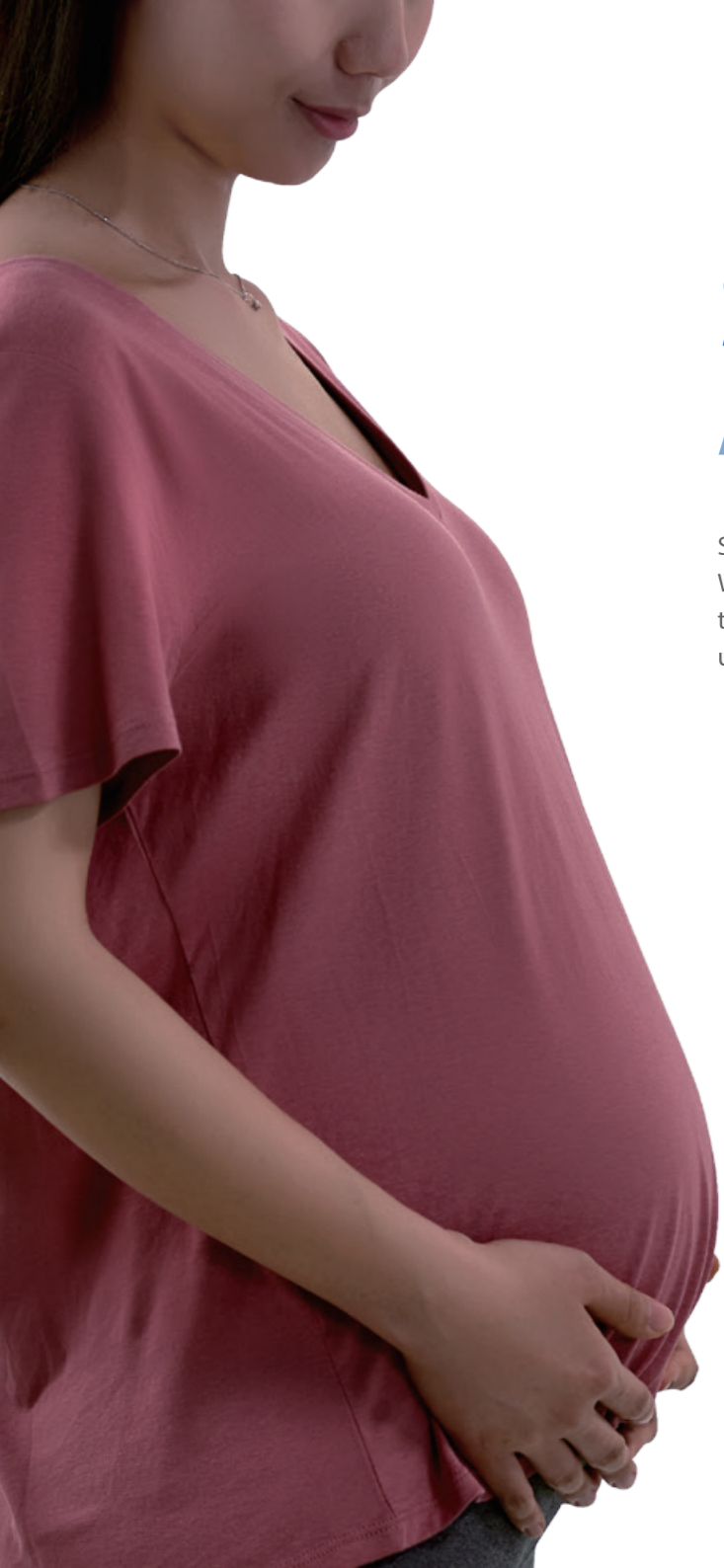
Single Crystal Probe



Composite Crystal Linear Probe



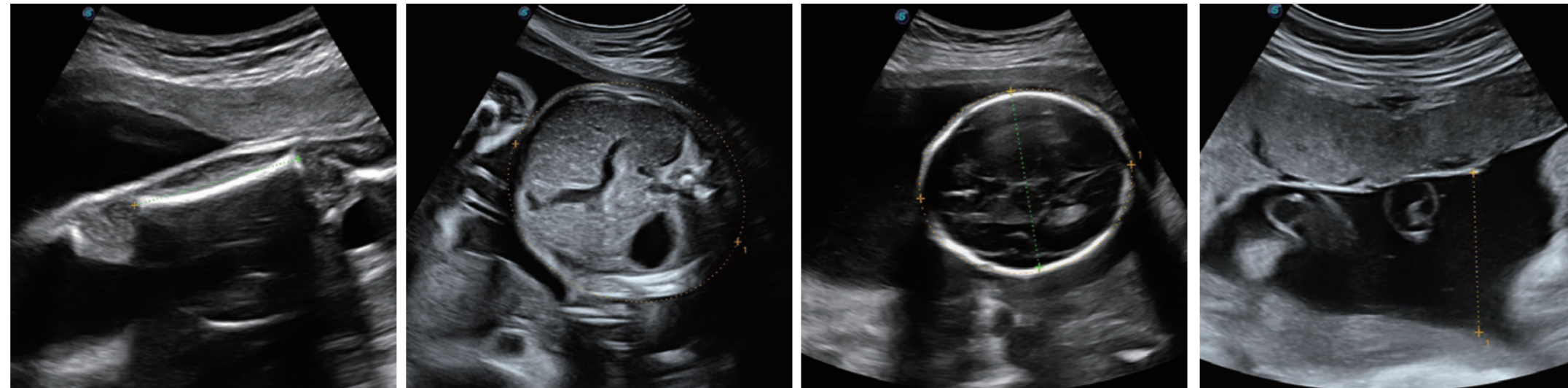
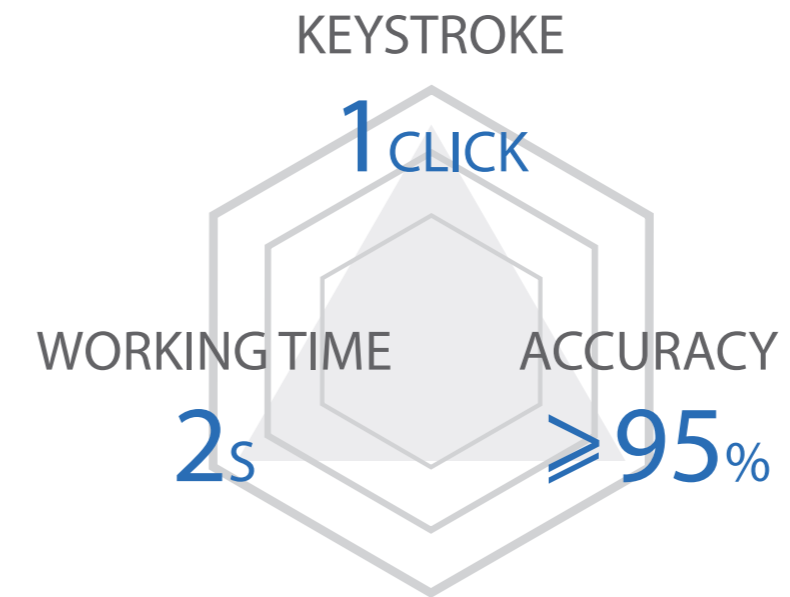
Volumetric Abdominal Probe



S-Fetus

Automated Obstetric Ultrasound Work-Flow

S-Fetus algorithm is designed to simplify the standard obstetric ultrasound procedure. With one touch, the best section image was selected and various measurements required to monitor fetus growth and development were automated, transforming obstetric ultrasound exams into a faster, more consistent and accurate experience.

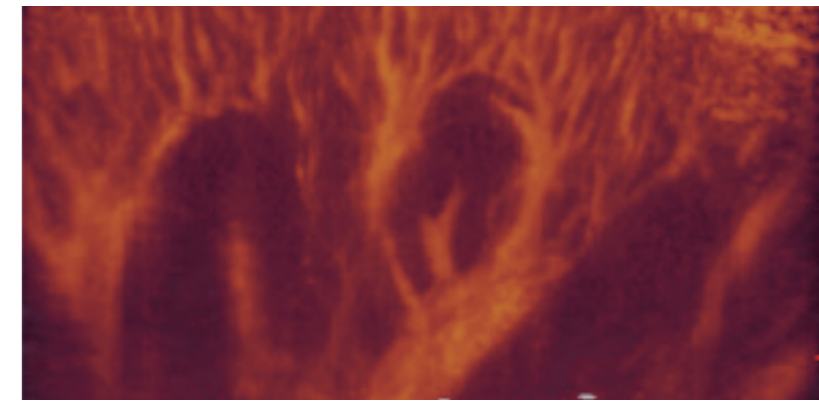




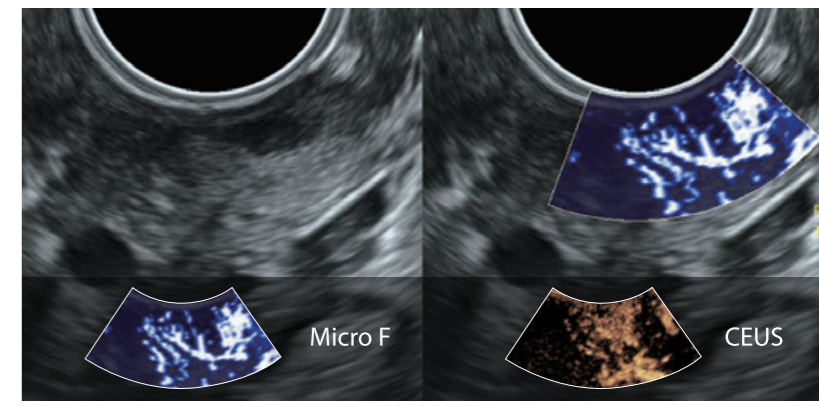
Micro F

Blood Flow Advanced Visualization

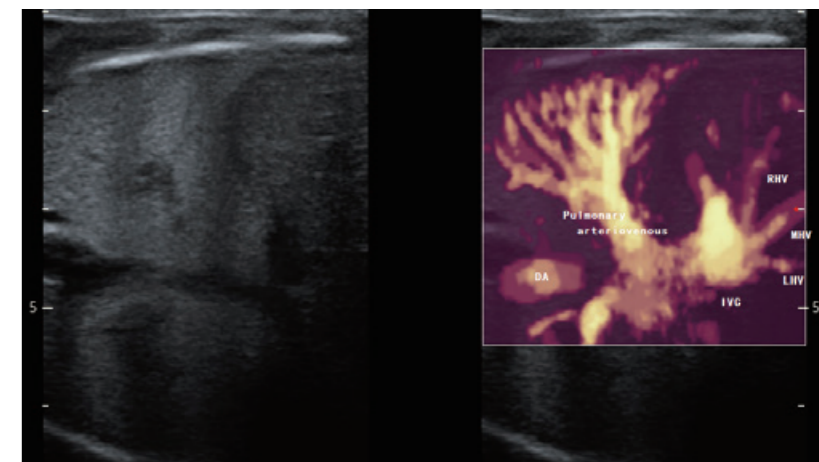
To expand the range of visible flow in ultrasound specially for imaging very low flow states, S60 is now equipped with a brand-new technology Micro F. It is a novel ultrasound Doppler technique employing a unique algorithm that allows minute vessels visualization and slow flow detection but without having to use a contrast agent, enabling advanced hemodynamic evaluation with higher sensitivity, better spatial resolution and minimal motion artifact.



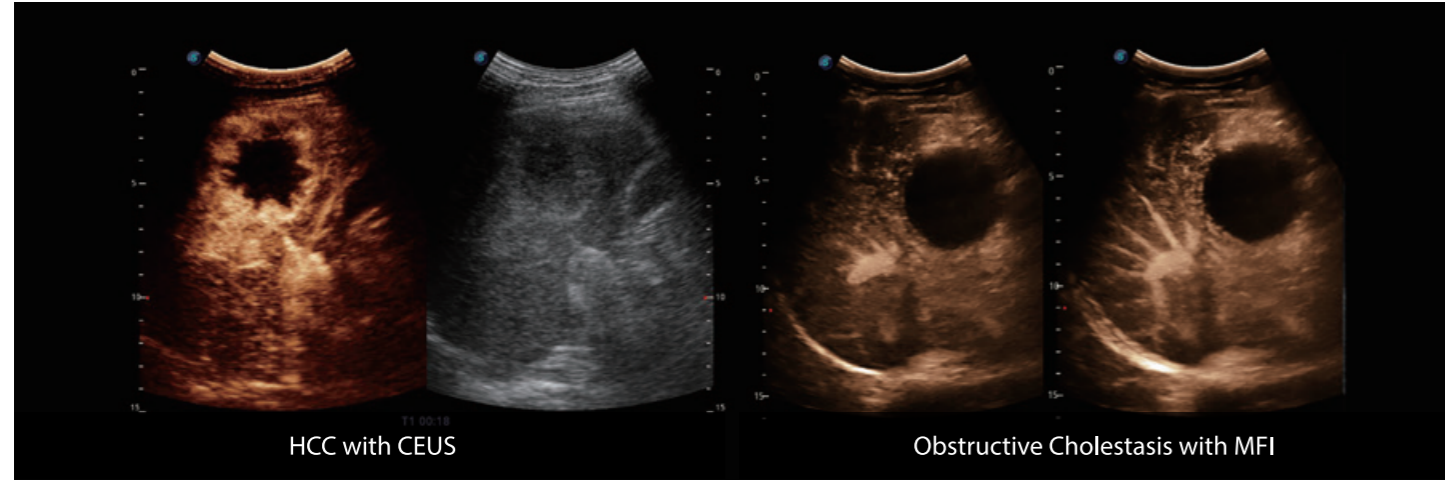
Renal Flow with Micro F



Cervical Poorly Differentiated Carcinoma with Micro F



Fetal Pulmonary Arteriovenous Flow with Micro F

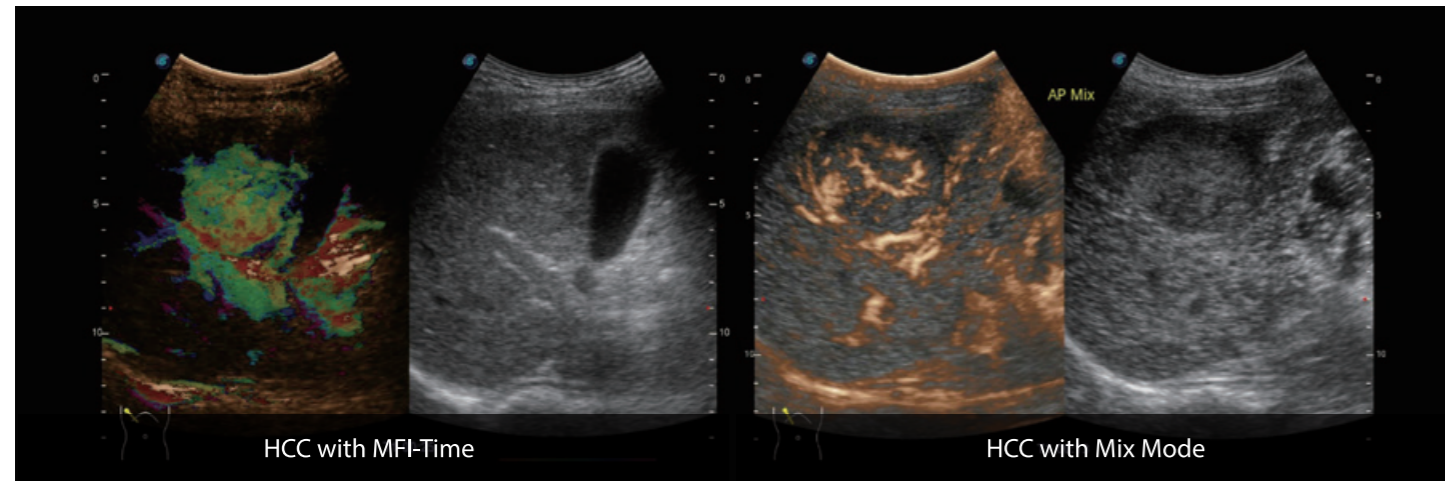


HCC with CEUS

Obstructive Cholestasis with MFI

Optimized Signal Filter Processing Technology makes full use of the non-linear signals and second harmonic signals to improve the image resolution and penetration.

Micro Flow Imaging automatically accumulates uptake of contrast agent and helps you trace small bubble populations, even in very low-perfused and peripheral areas.



HCC with MFI-Time

HCC with Mix Mode

MFI-Time helps to visualize both vascularization and perfusion by color coding the arrival times of contrast agents on different phases.

Mix Mode displays overlapped contrast enhanced image with the fundamental B mode image to help doctors better locate target lesion.



Contrast-Enhanced Ultrasound

Performance That's Clear to See

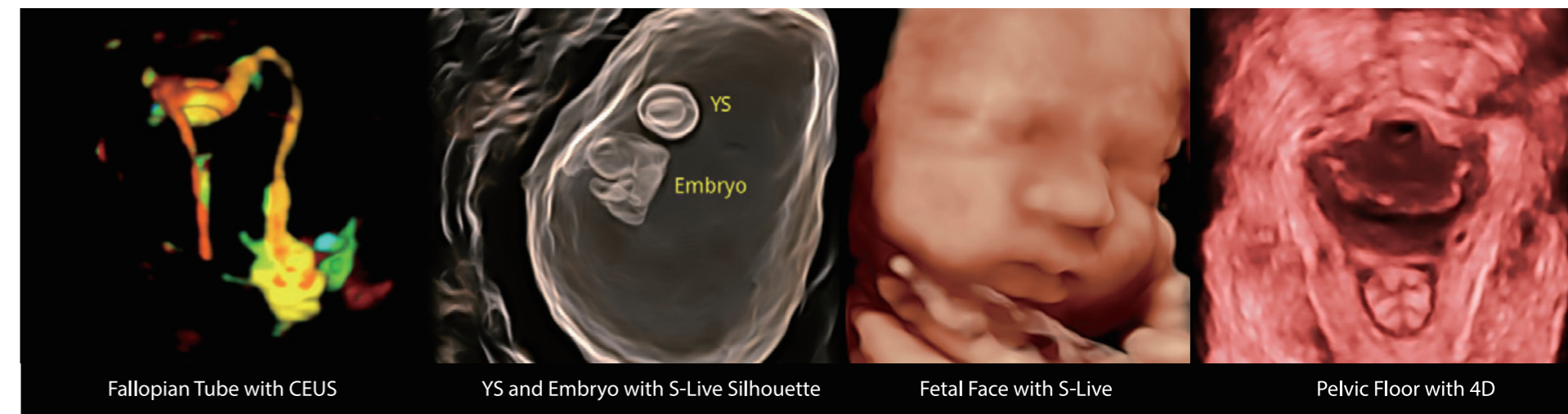
The comprehensive contrast-enhanced ultrasound imaging and quantification package allows doctors to assess perfusion dynamics in a wide range of clinical setting. The unique Dynamic Acoustic Control technology effectively controls the acoustic pressure of the contrast agent, enabling longer contrast agent duration and better lesion perfusion of delayed phase observation.



Smart 3D/4D

Made Easy and Efficient

The new high density volume rendering engine of S60 significantly optimizes signal processing and 3D rendering, making its volumetric performance outshines others in terms of high volume rates, exceptional details, and realistic effect. The comprehensive volume imaging suite extends your diagnostic capabilities into the next era of imaging with extraordinary image quality and streamlined workflow.








Inspired Design


Improved User Experience

S60 is crafted for optimal user experience by taking ergonomics and unhindered workflow into consideration. Clinically tailored tools are designed to alleviate your fatigue from busy schedules.


 User Authorization Management


 Sono-help Tutorials

 Gel Warmer

 Height Adjustment

 13.3" Quick Responsive Touch Screen

 Bluetooth Remote Control

 Wireless Wi-Fi Connection

Sono-Synch

Facilitates On-line Education and Live Telemedicine

Sono-Synch is an optional accessory designed to facilitate telemedicine and distance ultrasound education by using an adjustable HD camera to stream and record high-quality videos on the S60 for on-line training and live telemedicine.

